



## **A1000 INSTALLATION, OPERATION AND MAINTENANCE**

### Introduction

The Jomar A1000, three-piece, ISO mount ball valves are intended for use with a pneumatic or electric rotary valve actuator. The Jomar A1000 valves are designed for simple replacement of internal components without any special tools.

### Disassembly

Ensure all safety precautions have been taken before removing the valve from the piping. Protective clothing should be worn to prevent bodily harm.

#### 1) Replacement of seats and body gaskets -

- A) Remove center section of valve, leaving flange end pieces in place.
- B) Remove seats from each end of valve, working the handle back and forth can help dislodge seats.
- C) Replace seats and body gaskets, reinstall valve center section.

#### 2) Replacement of stem seal and V-ring packing

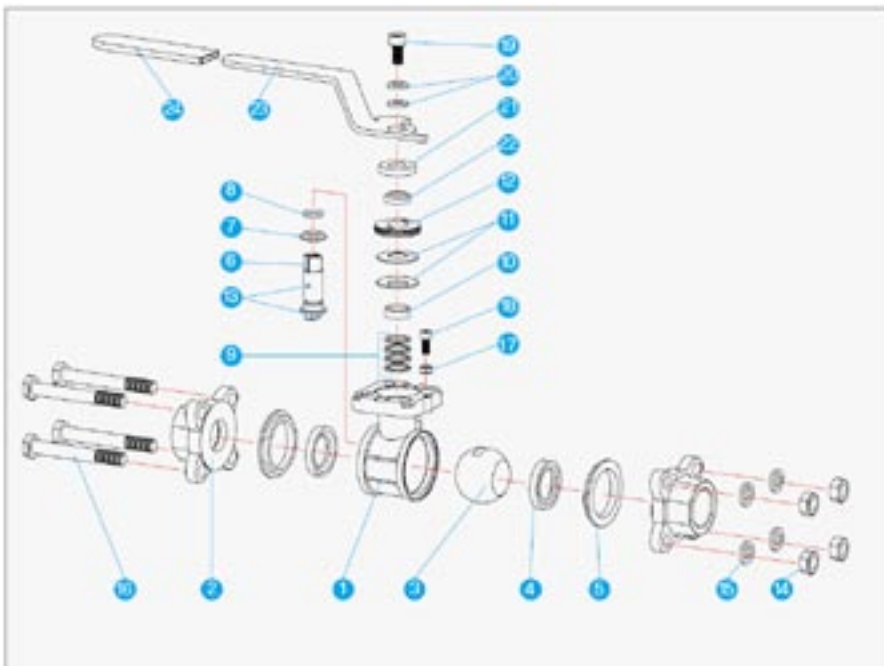
- A) Follow instructions above and remove or swing out center section.
- B) Remove seats and body gaskets.
- C) Loosen disc plate, if necessary, place a metal rod of diameter smaller than hole in ball, through the ball
- D) Remove disc plate with any two-pronged tool.
- E) Remove Bellville washers and packing gland

- F) Turn the valve to the closed position. The ball should slip out with a little pressure.
- G) Push stem downward, remove stem, then remove pyramidal stem seal.
- H) Clean the stem.
- I) Replace new pyramidal stem seal.
- J) Clean the body.
- K) Remove and replace V-ring packing.
- L) Replace stem, Bellville washers and packing gland.
- M) Replace the disc plate, tighten disc plate with a two-pronged tool.

Note: Tighten the disc plate snugly to be sure the Bellville washer is fully compressed.

- N) Turn valve to closed position and replace the ball.
- O) Replace seats and body gaskets.
- P) Swing the body into place and tighten the bolts/nut to the appropriate torque from the table shown.

Valve Size	Torque
1/4" - 1/2"	70 in/lbs
3/4" - 1"	165 in/lbs
1-1/4" - 1-1/2"	310 in/lbs
2"	510 in/lbs
2-1/2" - 4"	995 in/lbs



NO.	PART NAME	MATERIALS	QTY
1	BODY	ASTM A351 GCFCM	1
2	END CAP	ASTM A351 GCFCM	2
3	BALL	SS316	1
4	SEAT	PTFE	2
5	BODY GASKET	PTFE	2
6	STEM	ASTM A479/304	1
7	PYRAMIDAL STEM SEAL	PTFE	1
8	O-RING	VITON	1
9	V-RING STEM PACKING	PTFE	-
10	GLAND	SS304	1
11	BELLEVILLE WASHER	SS304	2
12	DISC PLATE	ASTM A479/304	1
13	ANTI-STATIC DEVICE	SS316	2
14	BODY NUT	SS304	4
15	BODY WASHER	SS304	4
16	BODY BOLT	SS304	4
17	STOP NUT	SS304	1
18	STOP BOLT	SS304	1
19	HANDLE BOLT	SS304	1
20	HANDLE WASHER	SS304	2
21	HANDLE DISC	SS304	1
22	HANDLE SPACER	PTFE	1
23	HANDLE	SS304	1
24	HANDLE SLEEVE	VINYL	1

\* size 1/4" to 3/4" use 2 pieces of stem packing; size 1" and above use 4 pieces of stem packing  
 Note: Anti-Static Device for 1/4" to 1/2" is on the side and bottom of the stem. For other sizes, it is located as shown in the drawing.  
 Items 17 to 24 are components for optional handle kit.