

Direct Mount Stainless Steel Ball Valve

Description

The Jomar direct mount ball valves are engineered and manufactured with ISO 5211 mounting pad for ease of mounting actuators, eliminating costly brackets and couplers.

Model

A-1000 series are 3-piece, 4-bolt (also known as swing out) pattern for serviceability. Full-port standard for maximum flow characteristics.

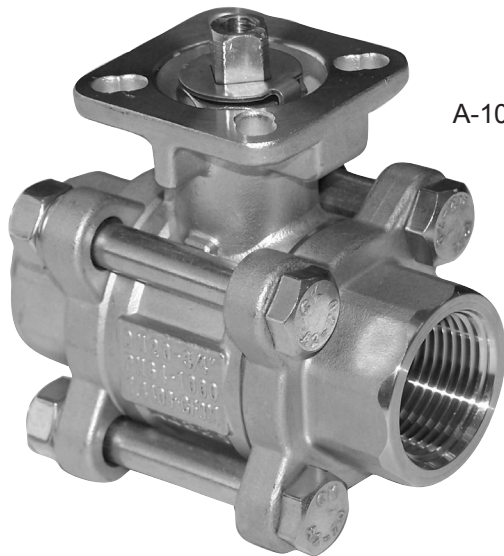
Specifications

High cycle, live loaded stem seal is standard on all sizes

- 1000 WOG / 150 WSP
- PTFE seats and stem packing
- ISO 5211 actuator mounting pad
- 3-piece swing out body
- Square stem easily accepts actuator inserts

Warranty

The Company, for a period of one year from the date of shipment, warrants each product or system of its own manufacture to the original purchaser to be free from defects in material and workmanship under normal use, service and maintenance.



A-1000

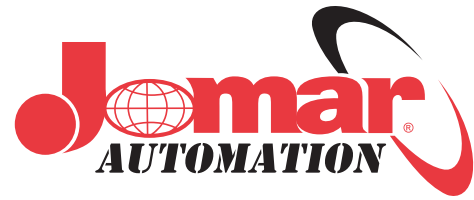
Architect/Engineer approval	
Job Name _____	Date _____
Model Specified _____	Quantity _____
Variations Specified _____	
Customer/Wholesaler _____	
Contractor _____	
Architect _____	

Note: Information subject to change without notice.



Jomar International Ltd.
7243 Miller Drive
Warren, MI 48092
Phone: 800-325-5690
Fax: 800-628-4194
www.jomar.com

Direct Mount Stainless Steel Ball Valve

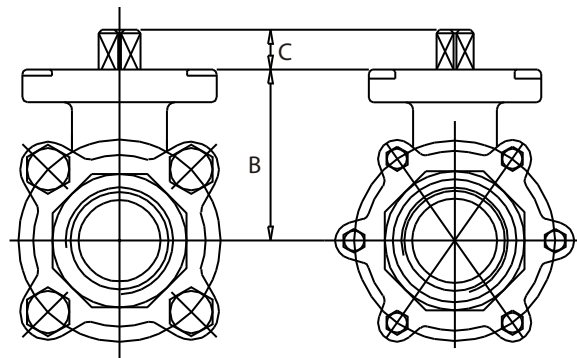


Description

The Jomar direct mount ball valves are engineered and manufactured with ISO 5211 mounting pad for ease of mounting actuators, eliminating costly brackets and couplers.

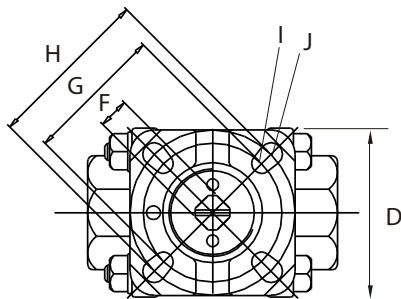
Dimensions in Inches

SIZE	port	A	B	C	F	D	G	H	I	J	Torque	ISO
1/2"	.50	2.96	1.57	.35	.35	1.65	1.41	1.65	.12	.12	40	F03/4
3/4"	.75	3.15	1.73	.35	.35	1.65	1.41	1.65	.12	.12	60	F03/4
1"	1.00	3.55	2.04	.43	.43	1.97	1.65	1.97	.12	.14	70	F04/5
1-1/4"	1.25	4.33	2.28	.43	.43	1.97	1.65	1.97	.12	.14	110	F04/5
1-1/2"	1.50	4.75	2.67	.55	.55	2.75	1.97	2.75	.14	.17	170	F05/7
2"	2.00	5.52	3.00	.55	.55	2.75	1.97	2.75	.14	.17	250	F05/7
2-1/2"	2.50	7.29	3.86	.70	.67	4.01	2.75	4.01	.17	.21	650	F07/10
3"	3.00	8.00	4.33	.70	.67	4.01	2.75	4.01	.17	.21	850	F07/10
4"	4.00	9.50	4.96	.94	.86	4.92	4.01	4.92	.21	.25	950	F010/12



1/4" through 2 1/2"

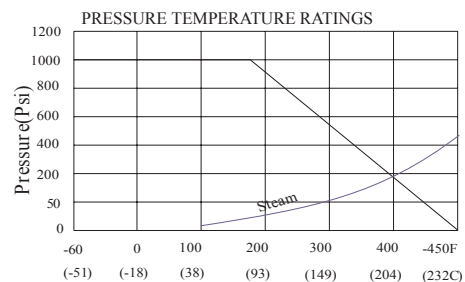
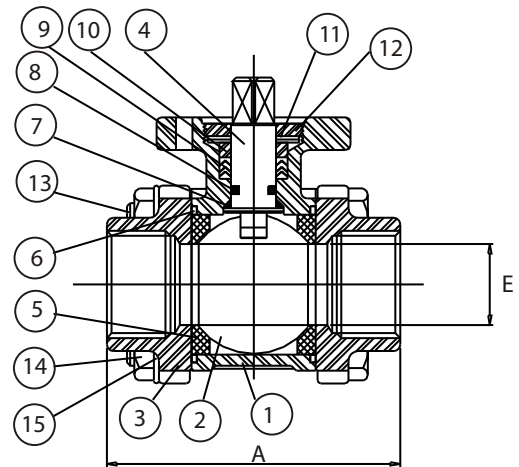
3" and 4"



Material Specifications

No.	Part Name	Materials
1	Body	316 Stainless Steel (CF8M)
2	Ball	316 Stainless Steel
3	End Cap (2)	316 Stainless Steel (CF8M)
4	Lock Washer	304 Stainless Steel
5	Nut	304 Stainless Steel
6	Seat (2)	PTFE
7	Body Gasket	PTFE
8	Bolt	304 Stainless Steel
9	Pyramidal Stem Seal	PTFE
10	O-Ring	Viton®
11	V-Ring Packing	PTFE
12	Gland Bushing	304 Stainless Steel
13	Stem	316 Stainless Steel
14	Belleville Washer	301 Stainless Steel
15	Disc Plate	304 Stainless Steel
16	Anti-Static Device	316 Stainless Steel

Viton is a registered trademark of DuPont Company



Note: Information subject to change without notice.



Jomar International Ltd.
7243 Miller Drive
Warren, MI 48092
Phone: 800-325-5690
Fax: 800-628-4194
www.jomar.com

© Copyright 2006 Printed in U.S.A.
A1000
0406