

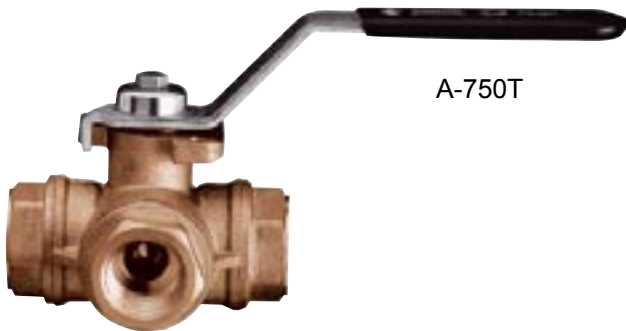
Direct Mount 3-Way Ball Valve

Description

Jomar's A-750T and A-750L 3-way, standard port brass ball valves are available 1/4" - 3" for direct mount applications.

Features

- ISO 5211 direct mounting pad
- Square valve stem for direct mounting to any ISO actuator
- Four seats standard
- Pressure rating: 400WOG - 100WSP
- Temperatures to 344° F
- Blowout proof stem
- Chrome plated brass ball
- PTFE seats and double O-ring stem packing



Warranty

The Company, for a period of one year from the date of shipment, warrants each product or system of its own manufacture to the original purchaser to be free from defects in material and workmanship under normal use, service and maintenance.

Architect/Engineer approval

Job Name _____ Date _____
Model Specified _____ Quantity _____
Variations Specified _____
Customer/Wholesaler _____
Contractor _____
Architect _____

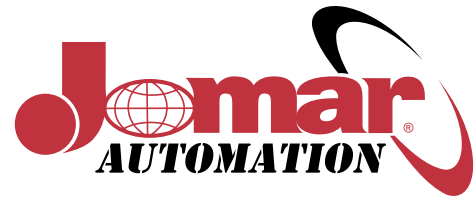
Note: Information subject to change without notice.



Jomar International Ltd.
7243 Miller Drive
Warren, MI 48092
Phone: 800-325-5690
Fax: 800-628-4194
www.jomar.com

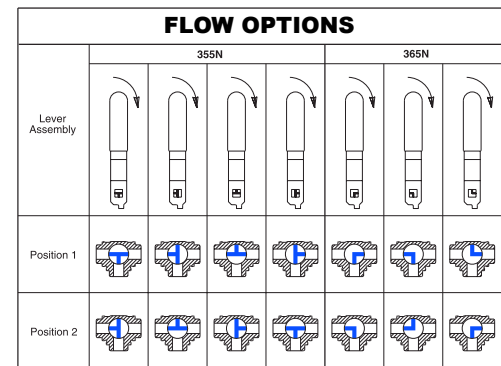
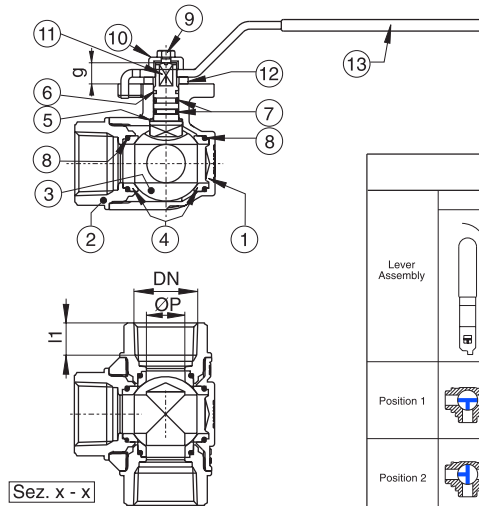
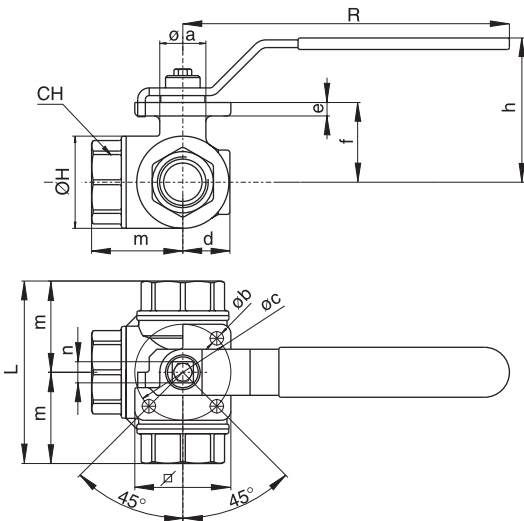
A-750T - A750L

Direct Mount 3-Way Ball Valve



SIZE	ØP	ØH	l1	L	m	CH	R	h	Øa	Øb	Øc	d	e	f	g	∠	n	CV	PSI	Lbs	* in-Lbs
1/4"	0.39	1.34	0.39	2.64	1.32	0.86	4.72	2.44	0.87	0.23	1.42 (ISO F03)	0.77	0.20	1.20	0.35	1.49	0.35	3.26	400	1.22	53.10
3/8"	0.43	1.34	0.40	2.64	1.32	0.86	4.72	2.44	0.87	0.23	1.42 (ISO F03)	0.77	0.20	1.20	0.35	1.49	0.35	3.50	400	1.16	53.10
1/2"	0.43	1.34	0.53	2.87	1.44	1.06	4.72	2.44	0.87	0.23	1.42 (ISO F03)	0.77	0.20	1.20	0.35	1.49	0.35	4.20	400	1.21	53.10
3/4"	0.59	1.53	0.55	3.19	1.60	1.25	4.72	2.52	0.87	0.23	1.42 (ISO F03)	0.87	0.20	1.29	0.35	1.49	0.35	7.00	400	1.44	53.10
1"	0.79	1.89	0.66	3.74	1.87	1.61	6.69	2.95	0.94	0.27	1.97 (ISO F05)	1.00	0.28	1.63	0.43	1.97	0.43	12.83	400	2.64	150.46
1"1/4	0.98	2.36	0.68	4.39	2.20	1.96	6.69	3.17	0.94	0.27	1.97 (ISO F05)	1.22	0.28	1.85	0.43	1.97	0.43	18.67	400	4.15	150.46
1"1/2	1.26	2.83	0.68	4.86	2.43	2.16	6.69	3.66	1.26	0.27	1.97 (ISO F05)	1.79	0.28	2.34	0.43	1.97	0.43	29.75	400	6.02	150.46
2"	1.57	3.38	0.70	5.73	2.87	2.75	9.05	4.43	1.46	0.35	2.76 (ISO F07)	1.75	0.32	2.90	0.59	2.75	0.55	43.76	400	9.08	274.37
2"1/2	1.95	4.37	0.93	6.93	3.47	3.34	9.05	4.86	1.46	0.35	2.76 (ISO F07)	2.20	0.32	3.35	0.59	2.75	0.55	70.00	400	16.33	380.58
3"	1.95	4.45	1.01	7.08	3.54	4.13	9.05	4.86	1.46	0.35	2.76 (ISO F07)	2.20	0.32	3.35	0.59	2.75	0.55	70.00	400	19.55	380.58

N POS	PART NAME	MATERIAL	N PCS
1	BODY	BRASS CW 617 NUNI EN 12165	1
2	END CONNECTION	BRASS CW 617 NUNI EN 12165	3
3	BALL	BRASS CW 617 NUNI EN 12165	1
4	BALL SEAT	P.T.F.E	4
5	THRUST WASHER	P.T.F.E	1
6	STEM SEAL	P.T.F.E	1
7	O-RING STEM	FKM (Viton®)	1
8	O-RINGS BODY	FKM (Viton®)	4
9	SCREW	Steel 6/S	1
10	BUSH	BRASS CW 614 NUNI EN 12164	1
11	STEM	BRASS CW 614 NUNI EN 12164	1
12	WASHER	NYLON	1
13	HANDLE	Fe DD 11 UNI EN 10111	1



Note: Information subject to change without notice.



Jomar International Ltd.
7243 Miller Drive
Warren, MI 48092
Phone: 800-325-5690
Fax: 800-628-4194
www.jomar.com

A750T-L B207